

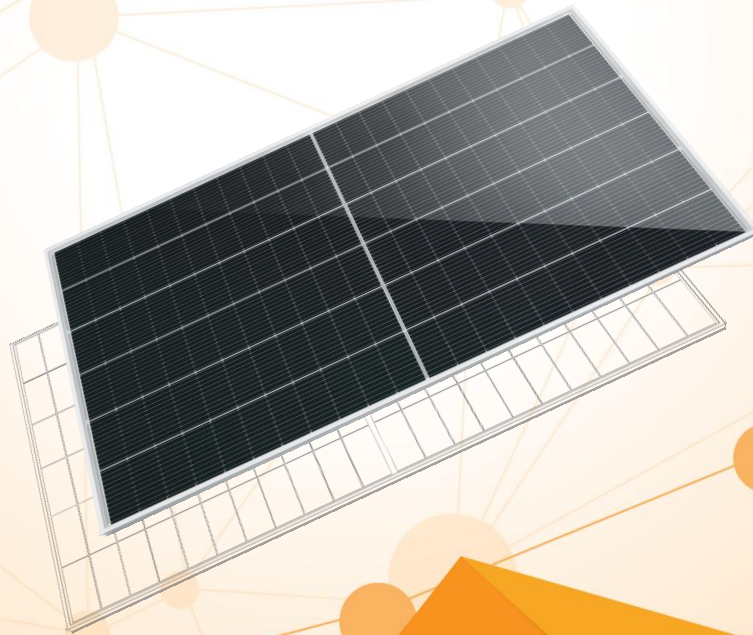


Ningbo Zhongyi New Energy Co., Ltd.

TOPCon Mono-crystalline PV Module

210R Cell | Non-destructive Cut | Bifacial

Module Type: ZY-G12R-48 | ZY-G12R-54
 ZY-G12R-60 | ZY-G12R-66



High Power High Compatibility

Outstanding performance in weak-light conditions, lower operating temperature

Different types of modules are suitable for various application scenarios



Product
Warranty



Performance
Warranty (Bifacial)

@NINGBO ZHONGYI NEW ENERGY CO., LTD.

Add: No. 509, Zhengtong North Road, High-tech Industrial Development Zone, Cixi City, Zhejiang Province, China

Tel: +86-574-63097978

Fax: +86-574-63097969

E-mail: info@renewpv.com

M210R-66N
TOPCon

620W

23.0%

Module efficiency

ZY620G12RNHB-132

TOPCon Mono-crystalline Bifacial Module

Electrical Specifications

Module Type		ZY620G12RNHB-132	
	Peak Power(Pmax)±3%	(W)	620
STC: AM1.5 Temperature 25°C Irradiance 1000 W/m ²	Power Sorting	(W)	0~+4.99
	Max.Power Voltage(Vmp)	(V)	40.39
	Max.Power Current(Imp)	(A)	15.35
	Open-circuit Voltage(Voc)±3%	(V)	47.98
	Short-circuit Current(Isc)±3%	(A)	16.30
NMOT: AM1.5 Temperature 20°C Wind speed 1m/s Irradiance 800 W/m ²	Peak Power(Pmax)±3%	(W)	466.2
	Max.Power Voltage(Vmp)	(V)	37.56
	Max.Power Current(Imp)	(A)	12.41
	Open-circuit Voltage(Voc)±3%	(V)	44.62
	Short-circuit Current(Isc)±3%	(A)	13.18
Operating Temperature	(°C)	-40~+85	
Max. Series Fuse Rating	(A)	30	
Max. System Voltage(DC)	(V)	1500 (IEC)	

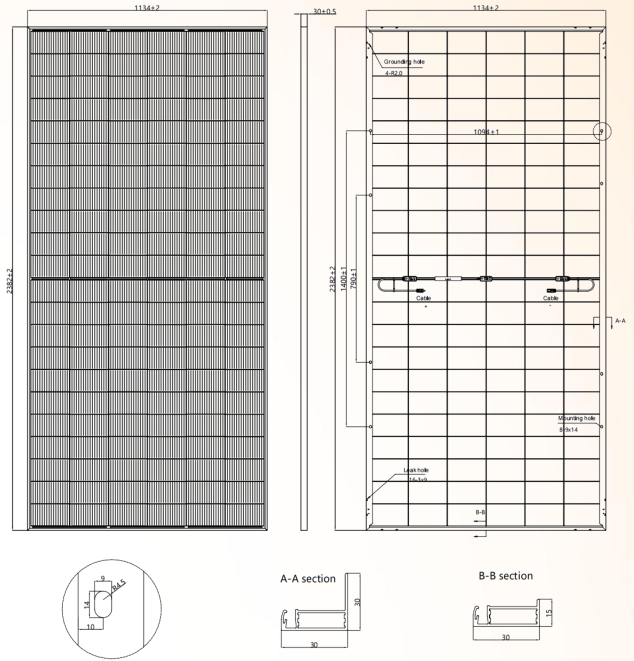
Mechanical Specifications

Solar Cells	N-Topcon-Mono-210R		
Arrangement	Type-6*11*2		
Front Glass	2.0mm tempered glass		
Back Glass	2.0mm tempered glass		
Frame	Anodized aluminium alloy		
Junction Box	IP68, 3 diodes		
Cables	4.0mm ² photovoltaic cables		
Connectors	MC4 compatible/DC 1500V		
Maximum Load Capacity	Snow-5400Pa/Wind-2400Pa		
Safety Rate	Class II (IEC)		
Fire Rate	Class C (TUV)		
Bifaciality	80±5%		
Packing Configuration			
Package Weight	1215Kg/pallet		
Package Size	2395*1140*1265mm		
20'GP Container	/	/	/
40'HQ Container	37 pcs/pallet	20 pallets/40'HQ	740 pcs

Dimensions of PV Module

Module Dimensions 2382*1134*30mm

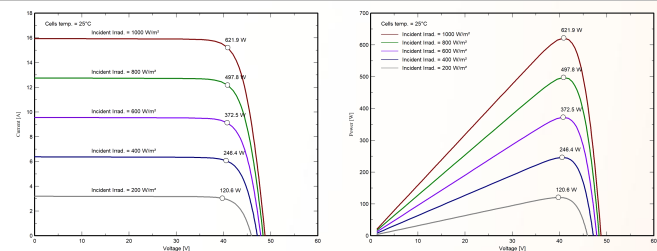
Module Weight 32.0 kg(±3%)



Temperature Characteristics

Temperature Coefficient (Pmax)	δ[%/°C]	-0.30
Temperature Coefficient (Voc)	β[%/°C]	-0.25
Temperature Coefficient (Isc)	α[%/°C]	+0.05
Nominal Operating Cell Temperature	NMOT	45°C±2°C

I-V & P-V Curves



Current-Voltage Characteristic

Power-Voltage Characteristic

Different Backside Power Gain

Power Gain	5%	15%	25%
Maximum Power(Pmax)	(W) 651.0	713.0	775.0
Max.Power Voltage(Vmp)	(V) 40.39	40.39	40.39
Max.Power Current(Imp)	(A) 16.12	17.65	19.19
Open-circuit Voltage(Voc)	(V) 47.98	47.98	47.98
Short-circuit Current(Isc)	(A) 17.17	18.81	20.45

